

HUMANOPTERE

TECHNICAL RIDER
Dance's Play for seven jugglers.
Compagnie La Main de l' Homme.



PRODUCTION / DIFFUSION

La Magnanerie

Diffusion, logistique: 01 43 36 37 12
martin@magnanerie-spectacle.com



STAGE

Dimensions needed : opening 10m, width 10m, height 7m under the grid.

Italian Legs

Black mats from right to left side. German wings needed sometimes

We'll bring 120 juggling's balls and clothes. We have a string (14 meters) with a black cotton (30cm high) to hide the balls all along the backdrop. So we need something to link it and some weights to load it.

WARNING: Light and sound control must be in the audience and not in control rooms !!!!

LIGHT

We wish pre-hanging if possible.

Control board 120 channels mini, 12 submasters, ascii (floppy disk or usb)

CONTACT : *Tony Guerin* / tony.guer1@free.fr / 0033615247518

SON

See Sound Folder attached

HABILLAGE

See Dressing Folder

DRESSING

We'll need to iron 7 shirts and trousers. In the schedule it will happen on the D Day in the morning (4 hours)

SCHEDULE

Ideally with a prehangng for legs, light and sound :

J-1 :

9h00/13h00 : Lighting focus, set in for the sound booth.

13H00/ 14H30 : Soundcheck

14h30/18H00 : End of light focus, light board checking.

Jour J :

9h00/13h00 : End of technical and warm up for artists

14h00/17h30 : Rehearsals

17h30/18h00 : Preset and clean the stage

20h00 : SHOW

If there is no prehangng, we must work untill 23h the day before the show.

STAFF REQUIREMENT

J-1 :

1 sound manager, 1 light manager, 1 stage manager, 2 juicers

Jour J :

1 sound manager, 1 light manager, 1 dresser (4 hours in the morning).

At the end of the show, we'll have to pick up all the balls and the gels if we brought it.

If there is no prehangng, we'll need 2 more people for the set-in.

DRESSING ROOMS

7 independants dressing rooms warm and showers with towels.

Some food (fruits vegetables....orange juice and water) are welcome

FOOD_:

We have four vegan in the team.

LIGHT REQUIREMENT

SPOTLIGHT



1 pc 1kw
1 par 64 cp 60
9 pc 2kw
1 Fresnel 5kw
28 pars 64 cp 62
22 pars 64 cp 61
7 profiles 613sx
4 profiles 713sx
3 profiles 614
1 stroboscope Atomic 3000

FILTERS

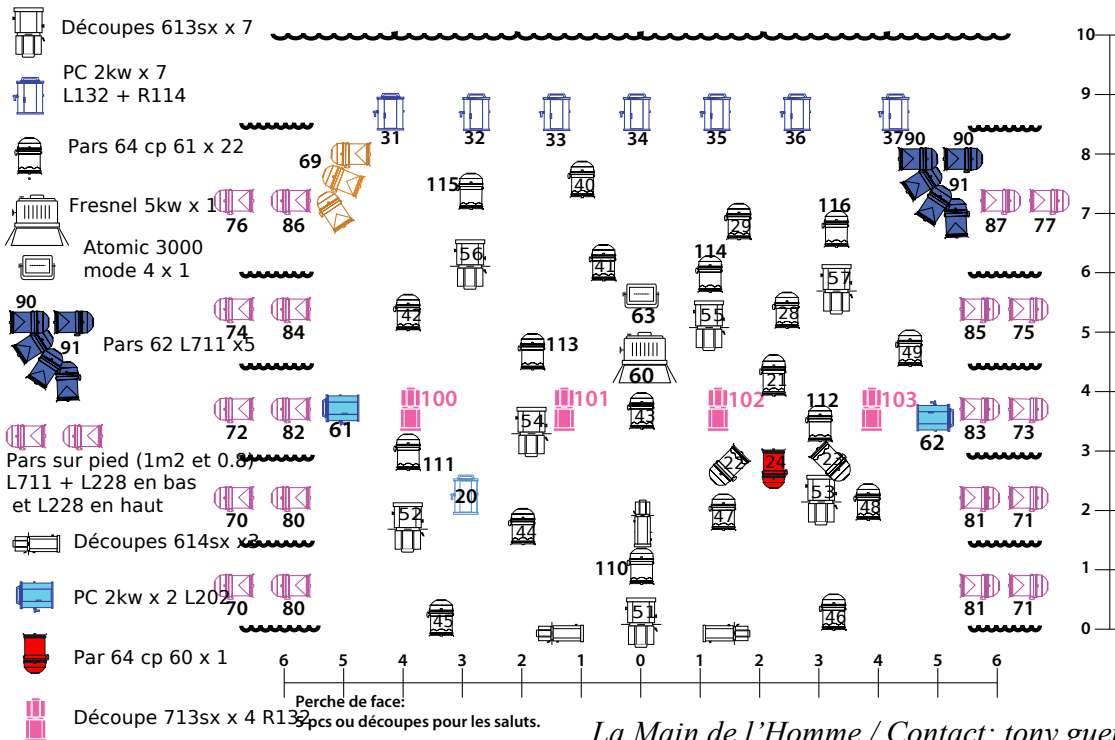
7 x L132 size PC 2kw
7 x R114 size PC 2kw
1 x L711 size PC 1kw
1 x R114 size PC 1kw
25 x L711 size PAR
20 x L228 size PAR
3 x L156 size PAR
4 x R132 size Profile 713
2 x L202 size PC 2 kw

Black Foil for stroboscope.



-  PC 1kw x 1
L711 + R114
-  PAR 64 cp 62 x
L156

HUMANOPTERE



HUMANOPTERE

Sound Technical Sheet

FOH

- . left + right + center with side fills on subs.
- . Subs separated in mono.
- . 4 stage monitors (115xt, pmx12) in downstage wings and near the backdrop.
- . 4 or more speakers in the house: enough speakers for side and rear to fill all the audience with 4 auxilliary output.

Show in 5.1 Each speaker is independant.

MICROPHONES

- 2 packs Wireless Mic with lapel mike DPA omni 4061 flesh color, 1 for the show and 1 for spare
- 1 hand wireless mike for curtain speech and meeting with audience at the end of the show
- 4 microphones static type KM184 with little boom

For wireless mike thanks to provide Transmitter and receiver Pro Ulxd or equivalent (no PGX please)

BOOTH

- 1 soundboard like Midas M32 or Behringer x32, yamaha cl, ql... with minimum 16 input et 16 output with delay and an equalizer 31 bands in insert.

We provide: computer – soundcard- controler

. INTERCOM

2 postes : 1lightbooth, 1 stage

WARNING : Sound and light control are in the audience and not in a cabin !!!!!!

Contact : Grégory ADOIR / 06 87 36 54 19 / gregoryadoir@yahoo.fr

PATCH HUMANOPTERE

PATCH IN/

Input	Instruments	Micros
1	Soundcard	RME 1
2	Soundcard	RME 2
3	Soundcard	RME 3
4	Soundcard	RME 4
5	Soundcard	RME 5
6	Soundcard	RME 6
7	Soundcard	RME 7
8	Soundcard	RME 8
9	Condenser mic	KM184
10	Condenser mic	KM184
11	Condenser mic	KM184
12	Condenser mic	KM184
13	Lavalier mic	DPA 4061 F34 Low Sens Beige
14	Lavalier mic	DPA 4061 F34 Low Sens Beige
15	Wirless microphone with handheld micro	Type SM58

PATCH OUT/

Out patch		TYPE
1	FOH L	
2	FOH R	
3	Center	
4	Front L	
5	Front R	
6	1 Surround L	
7	2 Surround R	
8	3 Surround L	
9	4 Surround R	
10	1 Stage monitor L	
11	2 Stage monitor R	
12	3 Stage monitor L	
13	4 Stage monitor R	
14	SUB	
15	FX	soundcard
16	Pink noise	soundcard